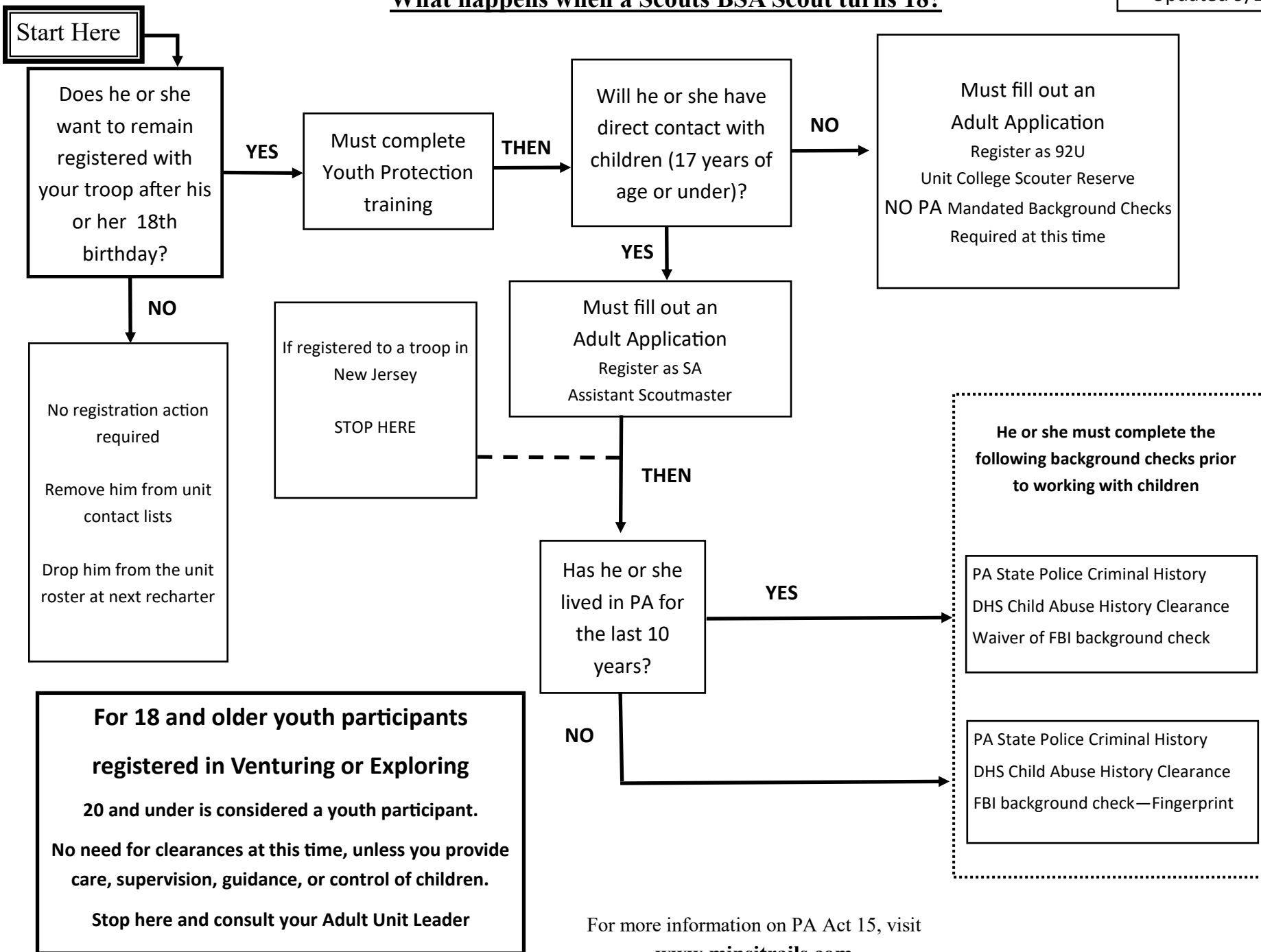


PA Background Checks

What happens when a Scouts BSA Scout turns 18?

Updated 9/23/2020



For 18 and older youth participants registered in Venturing or Exploring 20 and under is considered a youth participant. No need for clearances at this time, unless you provide care, supervision, guidance, or control of children. Stop here and consult your Adult Unit Leader

For more information on PA Act 15, visit www.minsitrails.com